

**Portland Public Schools
Enrollment Summaries
October, 2005**

Table of Contents

[Introduction](#)

Historical Enrollment

[Enrollment Trends: 1, 5 and 10 year](#)

[Recent Enrollment Trends](#)

October 2005 Enrollment

[By Grade](#)

[By Ethnicity](#)

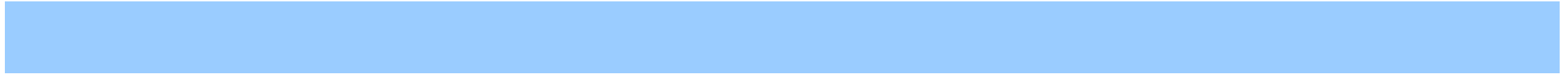
[By Gender](#)

[By Program Type](#)

Introduction

This summary report is a profile of current and historical enrollments for Portland Public Schools. Included are various summaries of these data, *e.g.*, by school/program, grade level, ethnicity, and gender.

Enrollment counts are compiled on or about the first of October. An enrolled student is defined as a student who attends one or more schools or programs within the District. Regardless of the number of schools or programs attended, each student is counted only once; the counts are unduplicated.



PORTLAND PUBLIC SCHOOLS

Enrollment Summary by Program Type, School and Year 1996-97 through 2005-06

Program Type												1-Year Trend (2005-06 - 2004-05)		5-Year Trend (2005-06 - 2001-02)		10-Year Trend (2005-06 - 1996-97)	
ODE#	School	1996-97	1997-98	1998-99	1999-00	2000-01	2001-02	2002-03	2003-04	2004-05	2005-06	#	%	#	%	#	%
903	Woodmere	460	485	491	488	474	503	490	477	458	449	-9	-2.0	-54	-10.7	-11	-2.4
904	Woodstock	367	354	320	322	337	372	364	345	343	338	-5	-1.5	-34	-9.1	-29	-7.9
905	Youngson	222	220	187	197	185	177				closed	N/A		N/A		N/A	
Subtotal Elementary Schools		26,503	25,972	25,594	24,818	24,420	24,125	23,177	21,924	21,505	21,381	-124	-0.6	-2,744	-11.4	-5,122	-19.3
831	Beaumont	711	710	670	629	631	670	610	577	542	536	-6	-1.1	-134	-20.0	-175	-24.6
832	Binnsmead	709	709	646	647	699	735	769	687	687	680	-7	-1.0	-55	-7.5	-29	-4.1
848	Fernwood	600	567	556	591	575	608	632	644	582	466	-116	-19.9	-142	-23.4	-134	-22.3
849	George	588	561	571	555	549	558	546	467	473	403	-70	-14.8	-155	-27.8	-185	-31.5
852	Gray	489	537	523	507	508	526	533	497	520	496	-24	-4.6	-30	-5.7	7	1.4
853	Gregory Heights	832	781	769	781	812	821	740	718	630	691	61	9.7	-130	-15.8	-141	-16.9
858	Hosford	515	482	434	431	426	374	386	377	405	448	43	10.6	74	19.8	-67	-13.0
1277	Jackson	795	770	842	808	796	807	823	768	773	694	-79	-10.2	-113	-14.0	-101	-12.7
863	Kellogg	743	667	635	645	645	667	671	633	591	482	-109	-18.4	-185	-27.7	-261	-35.1
1243	Lane	726	770	658	657	678	696	652	638	592	553	-39	-6.6	-143	-20.5	-173	-23.8
877	Mt. Tabor	696	732	678	672	670	700	707	729	696	676	-20	-2.9	-24	-3.4	-20	-2.9
878	Ockley Green	661	587	519	486	408	490	475	427	385	318	-67	-17.4	-172	-35.1	-343	-51.9
881	Portsmouth	494	459	460	403	434	489	522	466	460	429	-31	-6.7	-60	-12.3	-65	-13.2
888	Sellwood	601	567	542	533	584	602	619	593	603	564	-39	-6.5	-38	-6.3	-37	-6.2
894	Tubman	581	518	508	565	541	517	463	373	294	273	-21	-7.1	-244	-47.2	-308	-53.0
898	West Sylvan	872	876	881	878	907	915	947	897	884	878	-6	-0.7	-37	-4.0	6	0.7
899	Whitaker	861	764	705	703	675	482	441	357	289	closed	N/A		N/A		N/A	
Subtotal Middle Schools		11,474	11,057	10,597	10,491	10,538	10,657	10,536	9,848	9,406	8,587	-819	-8.7	-2,070	-19.4	-2,887	-25.2
906	Benson	1,457	1,455	1,457	1,486	1,475	1,479	1,501	1,498	1,501	1,452	-49	-3.3	-27	-1.8	-5	-0.3
909	Cleveland	1,237	1,232	1,255	1,242	1,322	1,366	1,381	1,388	1,332	1,449	117	8.8	83	6.1	212	17.1
911	Franklin	1,580	1,564	1,547	1,464	1,488	1,470	1,460	1,528	1,547	1,404	-143	-9.2	-66	-4.5	-176	-11.1
912	Grant	1,692	1,767	1,907	1,912	1,794	1,798	1,848	1,835	1,848	1,815	-33	-1.8	17	0.9	123	7.3
913	Jefferson Campus	955	985	916	842	892	855	826	702	661	647	-14	-2.1	-208	-24.3	-308	-32.3
4160	School of Champions									347	299						
4161	School of Pride									314	348						
914	Lincoln	1,362	1,338	1,357	1,304	1,374	1,469	1,429	1,483	1,444	1,485	41	2.8	16	1.1	123	9.0

PORTLAND PUBLIC SCHOOLS

Enrollment Summary by Program Type, School and Year 1996-97 through 2005-06

Program Type												1-Year Trend (2005-06 - 2004-05)		5-Year Trend (2005-06 - 2001-02)		10-Year Trend (2005-06 - 1996-97)	
ODE#	School	1996-97	1997-98	1998-99	1999-00	2000-01	2001-02	2002-03	2003-04	2004-05	2005-06	#	%	#	%	#	%
915	Madison	1,300	1,243	1,239	1,236	1,241	1,204	1,261	1,194	1,063	983	-80	-7.5	-221	-18.4	-317	-24.4
917	Marshall Campus	1,284	1,277	1,348	1,332	1,278	1,222	1,102	949	906	955	49	5.4	-267	-21.8	-329	-25.6
4153	BizTech High									217	297						
4154	Pauling Academy of Integrated Sciences									200	282						
2175	Marshall Night Program									98	100						
4155	PDX Academy of International Studies									198							
4156	Renaissance Arts Academy									193	276						
918	Roosevelt Campus	1,324	1,205	1,118	1,155	1,131	1,141	989	825	850	778	-72	-8.5	-363	-31.8	-546	-41.2
4162	A.C.T. School									303	282						
4165	P.O.W.E.R. School									261	284						
4164	Spanish-English International									240	212						
4163	Two Rivers Community School									46							
922	Wilson	1,450	1,503	1,514	1,576	1,614	1,644	1,630	1,580	1,531	1,632	101	6.6	-12	-0.7	182	12.6
Subtotal High Schools		13,641	13,569	13,658	13,549	13,609	13,648	13,427	12,982	12,683	12,600	-83	-0.7	-1,048	-7.7	-1,041	-7.6
Subtotal Regular Schools & Programs		51,618	50,598	49,849	48,858	48,567	48,430	47,140	44,754	43,594	42,568	-1,026	-2.4	-5,862	-12.1	-9,050	-17.5
IB. FOCUS / ALTERNATIVE PROGRAMS																	
1361	Adventure School (at Markham)	90	85								closed	N/A		N/A		N/A	
1891	Counteract Returning	5									closed	N/A		N/A		N/A	
1363	da Vinci	140	221	312	318	316	319	320	327	350	380	30	8.6	61	19.1	240	171.4
2749	E.S.L. Assessment Center	55	53	40		17	32	9				N/A		N/A		N/A	
1808	E.S.L. Newcomer Site 2										closed	N/A		N/A		N/A	
1362	Environmental School	179	190	182	185	190	218	225	233			N/A		N/A		N/A	
2724	Head Start Early Childhood Education	580	569	574	566	606	527	620	539	528	625	97	18.4	98	18.6	45	7.8
	Hispanic Program (at Madison)	14									closed	N/A		N/A		N/A	
916	Metropolitan Learning Center	461	490	426	426	419	418	420	432	439	447	8	1.8	29	6.9	-14	-3.0
910	Monroe Program	63	63	46	48	41	34	20			closed	N/A		N/A		N/A	
4227	Native Montessori Program									23	22	-1	-4.3	N/A		N/A	
1332	Northeast Community School	93	98	57							closed	N/A		N/A		N/A	
	P.A.X.	10									closed	N/A		N/A		N/A	
1817	P.I.V.O.T.	22	27	19	13	2	12	15			closed	N/A		N/A		N/A	

PORTLAND PUBLIC SCHOOLS

Enrollment Summary by Program Type, School and Year 1996-97 through 2005-06

Program Type												1-Year Trend (2005-06 - 2004-05)		5-Year Trend (2005-06 - 2001-02)		10-Year Trend (2005-06 - 1996-97)	
												#	%	#	%	#	%
ODE#	School	1996-97	1997-98	1998-99	1999-00	2000-01	2001-02	2002-03	2003-04	2004-05	2005-06	#	%	#	%	#	%
3167	Portland Evening H.S. at Benson	58	24						10	20	15	-5	-25.0	N/A		-43	-74.1
1818	Portland Night H.S. at Grant	118	113	99	90	83	82	100	98	76	91	15	19.7	9	11.0	-27	-22.9
	Roosevelt Evening		63								closed	N/A		N/A		N/A	
2402	Turnaround		82	44	49	42					closed	N/A		N/A		N/A	
920	Meek Professional Technical H.	201	190	198	205	192	160	188	158	146	117	-29	-19.9	-43	-26.9	-84	-41.8
1364	Winterhaven	99	139	143	165	159	169	167	254	296	339	43	14.5	170	100.6	240	242.4
	Subtotal Focus / Alternative Programs	2,188	2,407	2,140	2,065	2,067	1,971	2,084	2,051	1,878	2,036	158	8.4	65	3.3	-152	-6.9
	Subtotal Regular & Focus Programs	53,806	53,005	51,989	50,923	50,634	50,401	49,224	46,805	45,472	44,604	-868	-1.9	-5,797	-11.5	-9,202	-17.1
1811	Albina Youth Opportunity School	57	54	69	41	49	29	41	50	43	51	8	18.6	22	75.9	-6	-10.5
1810	Christian Women Against Crime	12	20	26							closed	N/A		N/A		N/A	
1628	DePaul Center	21	19	27	21	24	23	21	18	18	21	3	16.7	-2	-8.7		0.0
2410	Genesis	37	32	27	28	27					closed	N/A		N/A		N/A	
1636	Greenhouse Alternative	48	75	51	45	31					closed	N/A		N/A		N/A	
1298	Helensview	35		20		27	23	19				N/A		N/A		N/A	
2409	LISTOS		30	71	108	102	94	64	62	57	91	34	59.6	-3	-3.2		N/A
2753	McCoy Academy	146	122	86							closed	N/A		N/A		N/A	
2754	McCoy East			7							closed	N/A		N/A		N/A	
2755	McCoy Middle School			10							closed	N/A		N/A		N/A	
2756	McCoy Southeast			23							closed	N/A		N/A		N/A	
2757	McCoy Teen Parent			12							closed	N/A		N/A		N/A	
1803	Mt. Scott Park Center for Learning	28	37	29	35	31	30	39	31	21	96	75	357.1	66	220.0	68	242.9
8002	Mt. Scott Park Center for Learning H.S.							59	58	62		N/A		N/A		N/A	
3012	New Avenues for Youth			15	48	36	35	36	48	20	20		0.0	-15	-42.9		N/A
3151	Open Meadow / CRUE				19	20	26	27	32	44	46	2	4.5	20	76.9		N/A
1821	Open Meadow H.S.	115	100	98	95	91	86	98	102	81	71	-10	-12.3	-15	-17.4	-44	-38.3
3021	Open Meadow M.S.			53	58	61	38	37	54	49	45	-4	-8.2	7	18.4		N/A
1802	Operation Easy	22	7								closed	N/A		N/A		N/A	
1865	Outfront House	8	8	8		6	9				closed	N/A		N/A		N/A	

PORTLAND PUBLIC SCHOOLS

Enrollment Summary by Program Type, School and Year 1996-97 through 2005-06

Program Type												1-Year Trend (2005-06 - 2004-05)		5-Year Trend (2005-06 - 2001-02)		10-Year Trend (2005-06 - 1996-97)	
ODE#	School	1996-97	1997-98	1998-99	1999-00	2000-01	2001-02	2002-03	2003-04	2004-05	2005-06	#	%	#	%	#	%
1871	S.E.R.P.	6	6	8	16	20	9	2				N/A		N/A		N/A	
1671	Serendipity	105	93	85	84	84	56	31				N/A		N/A		N/A	
1806	Shriners Hospital		4	1								N/A		N/A		N/A	
2769	Special Education Out-of-State		1	1								N/A		N/A		N/A	
9999	Special Education Transition	2						2				N/A		N/A		N/A	
1751	Thomas Edison H.S.	5	7	7	9		12	9				N/A		N/A		N/A	
2743	Tualatin Valley Day Treatment				1	1	4	3				N/A		N/A		N/A	
2771	Vision Services	240	122	140	135	132	136	132				N/A		N/A		N/A	
2772	Vocational Education Only	1	7	5		9	4		1			N/A		N/A		N/A	
897	Waverly Children's Home	45	43	27	28	39	32	18	9	18	9	-9	-50.0	-23	-71.9	-36	-80.0
921	White Shield	39	31	37	35	19	23	26	28	24	20	-4	-16.7	-3	-13.0	-19	-48.7
1689	Woodmont	13	20	18	16	14	5			1		N/A		N/A		N/A	
2773	Wynne Watts Day Treatment		1	3	4	3	1					N/A		N/A		N/A	
Subtotal Special Education Programs		2,647	2,112	2,169	2,117	2,311	2,330	2,170	462	562	525	-37	-6.6	-1,805	-77.5	-2,122	-80.2
IV. PUBLIC CHARTER PROGRAMS																	
4400	Arthur Academy										54	N/A		N/A		N/A	
3451	CM2's Opal School						25	42	50	71	81	10	14.1	56	224.0	N/A	
3991	Emerson Public Charter								98	97	121	24	24.7	N/A		N/A	
4215	Garden Laboratory Charter School									35	closed	N/A		N/A		N/A	
3244	McCoy Public Charter					66	97				closed	N/A		N/A		N/A	
4212	Self Enhancement Academy									49	92	43	87.8	N/A		N/A	
3616	Trillium Public Charter							152	198	199	223	24	12.1	N/A		N/A	
Subtotal Public Charter Programs		0	0	0	0	66	122	194	346	451	571	120	26.6	449	368.0	N/A	
Summary		58,022	56,583	55,831	54,746	54,427	54,150	52,969	48,883	47,656	47,008	-648	-1.4	-7,142	-13.2	-11,014	-19.0

Program type (i.e., elementary, middle, high, etc.) reflects the most recent administrative assignment. In recent years enrollment counts are compiled on or about the first of October. An enrolled student is defined as a student who attends one or more schools or programs within the District. Regardless of the number of schools or programs attended, each student is counted only once; the counts are unduplicated. Schools and programs that are no longer in operation are designated as 'closed'.

PORTLAND PUBLIC SCHOOLS

Enrollment Summary by Program Type, School and Year 1996-97 through 2005-06

Program Type												1-Year Trend (2005-06 - 2004-05)		5-Year Trend (2005-06 - 2001-02)		10-Year Trend (2005-06 - 1996-97)	
												#	%	#	%	#	%
ODE#	School	1996-97	1997-98	1998-99	1999-00	2000-01	2001-02	2002-03	2003-04	2004-05	2005-06	#	%	#	%	#	%

In the 2005-06 school year, two high schools located at the Marshall campus, Linus Pauling Academy and Portland Academy of International Studies, merged into one school renamed Pauling Academy of Integrated Sciences.

Applegate, Edwards, Kenton, Richmond and Smith Elementary Schools were closed at the end of the 2004-05 school year. Whitaker Middle school was closed as well. Most elementary school-aged students residing in the Applegate neighborhood area went on to attend Woodlawn. Similarly, students residing in the Edwards neighborhood area went on to attend Abernethy, those at Kenton to Chief Joseph; those at Richmond to Abernethy, Creston or Glencoe; and those at Smith went on to Capitol Hill, Maplewood or Markham. Most middle school students residing in the Whitaker neighborhood area went on to attend Tubman.

In the 2004-05 school year, the Environmental Middle School combined with Sunnyside Elementary and was renamed as Sunnyside Environmental School. In addition, the Odyssey program and its students (formerly at Chapman Elementary) moved to Hayhurst Elementary. The Family Cooperative program (formerly at Sunnyside) moved to Bridger Elementary.

As of the 2003-04 school year, enrollment summaries no longer include the following programs: Hospital Programs (Emanuel, Oregon Health Science University, Oregon State and Shriners Hospitals); M.E.S.D. Functional Living Skills; Portland Early Intervention Program (PeiP) and Columbia Regional Programs (Autism, Deaf and Hard of Hearing, Orthopedic and Vision Services). Administration of the Hospital Programs, Functional Living Skills and PeiP was transferred to Multnomah Education Service District (M.E.S.D.). Historically, enrollments reported for Columbia Regional Programs represent non-District students served by PPS staff on a part-time basis. For purposes of State reporting, membership (i.e., enrollment) for Columbia Regional Program students is reported by the resident District.

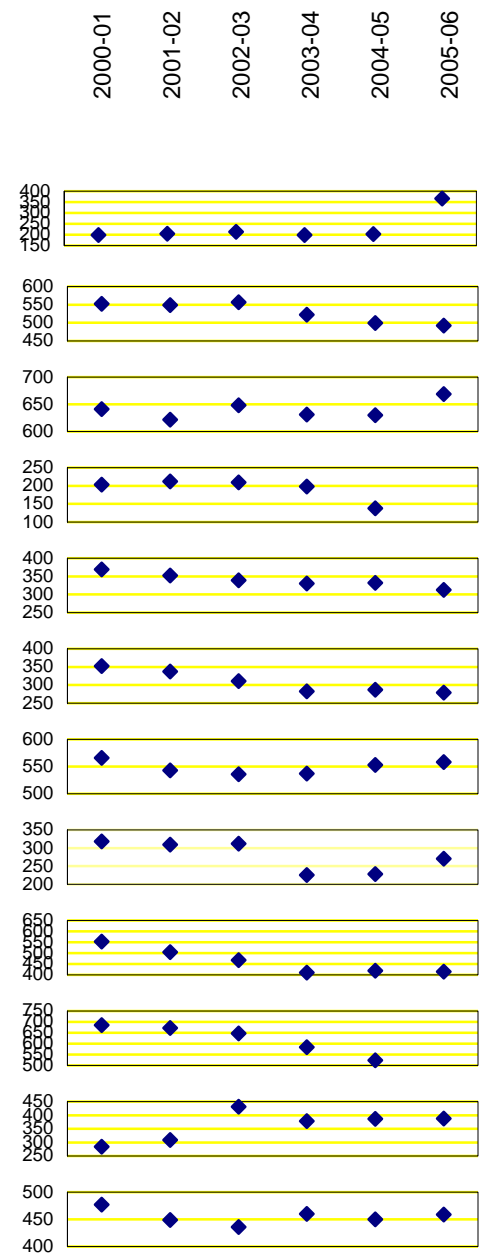
Brooklyn and Meek Elementary Schools were closed at the end of the 2002-03 school year. Most students residing in the Brooklyn neighborhood area went on to attend Grout Elementary, while those residing in the Meek neighborhood area attended Vernon Elementary. Similarly, Wilcox and Youngson Elementary Schools were closed at the end of the 2001-02 school year. Most students residing in the Wilcox neighborhood area went on to attend Vestal Elementary, while those residing in the Youngson neighborhood area attended Bridger Elementary.

Pioneer Schools consist of elementary, middle and high school programs. It was formerly known as ES B Program at Youngson, MS B Program at Foster and HS B Program at Columbia. Enrollment counts for the 2005-06 were derived from the eSIS Report 28-State Reporting (OR), Fall Membership.

PORTLAND PUBLIC SCHOOLS
Enrollment Trends 2000-01 through 2005-06
by Program Type, School and Year (Grades PK through 12)

Program Type		Year						Enrollment Trends		
		2000-01	2001-02	2002-03	2003-04	2004-05	2005-06	St. Dev	1-Year Change	
ODE#	School							#	%	
IA. REGULAR SCHOOLS & PROGRAMS										
822	Abernethy	198	204	213	199	203	366	66.6	163	80.3
823	Ainsworth	552	549	557	522	499	492	28.4	-7	-1.4
824	Alameda	641	622	648	631	630	669	16.8	39	6.2
825	Applegate	203	212	209	198	138		N/A	N/A	N/A
826	Arleta	369	352	339	330	332	313	19.4	-19	-5.7
827	Astor	352	337	311	283	287	279	30.6	-8	-2.8
828	Atkinson	566	543	536	537	553	558	12.1	5	0.9
829	Ball	318	309	312	226	228	271	42.3	43	18.9
830	Beach	553	504	468	411	419	414	58.0	-5	-1.2
833	Boise-Eliot	685	672	647	584	523	461	89.4	-62	-11.9
834	Bridger	284	309	431	378	387	388	55.1	1	0.3
835	Bridlemile	477	449	436	460	450	459	13.8	9	2.0

Student Enrollment



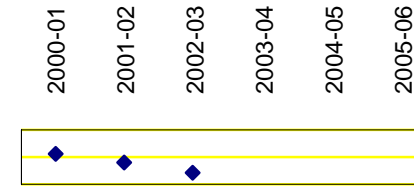
PORTLAND PUBLIC SCHOOLS

Enrollment Trends 2000-01 through 2005-06

by Program Type, School and Year (Grades PK through 12)

Program Type		Year	Year						Enrollment Trends		
			2000-01	2001-02	2002-03	2003-04	2004-05	2005-06	St. Dev	1-Year Change	
ODE#	School								#	%	
826	Brooklyn		156	140	121				N/A	N/A	N/A
837	Buckman		536	530	534	526	529	537	4.3	8	1.5
838	Capitol Hill		285	310	308	282	255	335	27.8	80	31.4
839	Chapman		513	527	484	449	414	453	42.6	39	9.4
840	Chief Joseph		320	298	287	266	234	393	54.3	159	67.9
841	Clarendon		417	393	416	338	339	325	42.1	-14	-4.1
842	Clark		531	532	556	515	499	500	21.9	1	0.2
843	Creston		361	353	327	301	246	290	43.0	44	17.9
844	Duniway		419	431	432	453	443	443	11.9	0	0.0
845	Edwards		218	212	202	189	199		N/A	N/A	N/A
847	Faubion		334	302	299	272	269	309	24.3	40	14.9
2413	Forest Park		284	334	377	407	456	517	83.8	61	13.4

Student Enrollment



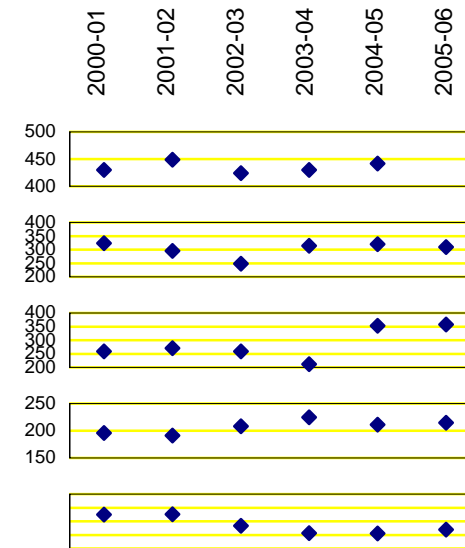
PORTLAND PUBLIC SCHOOLS

Enrollment Trends 2000-01 through 2005-06

by Program Type, School and Year (Grades PK through 12)

Program Type		Year						Enrollment Trends		
		2000-01	2001-02	2002-03	2003-04	2004-05	2005-06	St. Dev	1-Year Change	
ODE#	School							#	%	
850	Glencoe	430	449	424	430	442	510	31.9	68	15.4
854	Grout	323	295	248	314	320	310	28.1	-10	-3.1
855	Hayhurst	259	271	259	212	353	358	58.0	5	1.4
857	Hollyrood	196	191	208	225	211	215	12.5	4	1.9
860	Humboldt	325	326	283	257	255	270	32.2	15	5.9
861	Irvington	511	510	506	491	473	445	26.1	-28	-5.9
862	James John	592	564	551	514	481	458	51.4	-23	-4.8
864	Kelly	526	481	491	491	478	484	17.5	6	1.3
865	Kenton	249	233	252	225	166		N/A	N/A	N/A
866	King	733	710	583	544	525	491	100.7	-34	-6.5
868	Laurelhurst	526	526	561	561	558	581	21.9	23	4.1
869	Lee	409	408	419	387	333	309	45.6	-24	-7.2

Student Enrollment



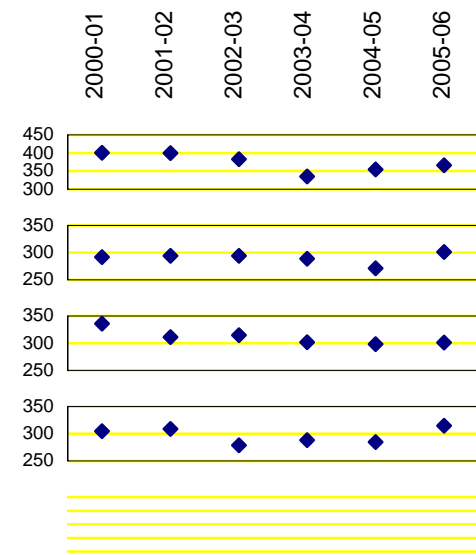
PORTLAND PUBLIC SCHOOLS

Enrollment Trends 2000-01 through 2005-06

by Program Type, School and Year (Grades PK through 12)

Program Type		Year						Enrollment Trends		
		2000-01	2001-02	2002-03	2003-04	2004-05	2005-06	St. Dev	1-Year Change	
ODE#	School							#	%	
870	Lent	401	400	383	335	355	366	26.2	11	3.1
871	Lewis	292	294	294	289	271	301	10.2	30	11.1
872	Llewellyn	336	311	315	302	298	301	14.1	3	1.0
873	Maplewood	305	309	279	288	285	315	14.7	30	10.5
1278	Markham	370	358	333	330	301	398	34.2	97	32.2
875	Marysville	400	395	394	367	349	336	27.0	-13	-3.7
876	Meek	198	198	219				N/A	N/A	N/A
879	Peninsula	323	328	333	293	271	254	32.9	-17	-6.3
883	Richmond	477	470	443	415	393	309	62.2	-84	-21.4
1299	Rieke	288	307	266	276	266	267	16.5	1	0.4
884	Rigler	525	492	474	489	466	442	28.0	-24	-5.2
885	Rose City Park	467	470	489	446	433	429	23.5	-4	-0.9

Student Enrollment

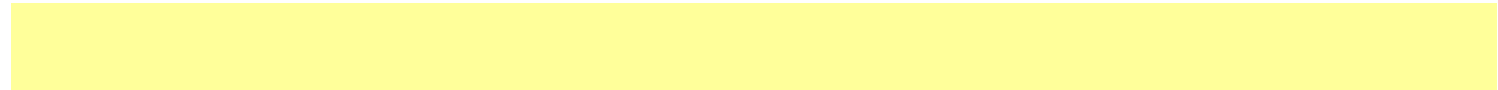


PORTLAND PUBLIC SCHOOLS

Enrollment Trends 2000-01 through 2005-06

by Program Type, School and Year (Grades PK through 12)

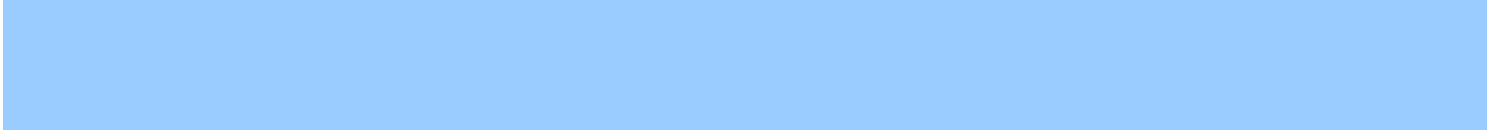
Program Type	Year						Enrollment Trends				
	ODE#	School	2000-01	2001-02	2002-03	2003-04	2004-05	2005-06	St. Dev	1-Year Change	%
886	Sabin / Access		394	370	292	393	413	422	47.0	9	2.2
887	Scott		492	512	457	442	377	369	58.6	-8	-2.1
889	Sitton		436	421	371	359	338	300	51.0	-38	-11.2
890	Skyline		203	209	201	214	197	201	6.2	4	2.0
891	Smith		234	252	251	238	219		N/A	N/A	N/A
892	Stephenson		369	393	353	352	348	325	22.7	-23	-6.6
893	Sunnyside Environmental		325	334	276	203	459	443	97.9	-16	-3.5
895	Vernon		502	445	405	445	386	384	45.3	-2	-0.5
896	Vestal		241	227	367	344	322	294	56.1	-28	-8.7



Student Enrollment

2000-01
2001-02
2002-03
2003-04
2004-05
2005-06

PORTLAND PUBLIC SCHOOLS
Enrollment Trends 2000-01 through 2005-06



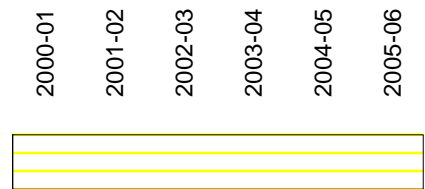
PORTLAND PUBLIC SCHOOLS

Enrollment Trends 2000-01 through 2005-06

by Program Type, School and Year (Grades PK through 12)

Program Type		Year						Enrollment Trends		
		2000-01	2001-02	2002-03	2003-04	2004-05	2005-06	St. Dev	1-Year Change	
ODE#	School							#	%	
1243	Lane	678	696	652	638	592	553	53.7	-39	-6.6
877	Mt. Tabor	670	700	707	729	696	676	21.5	-20	-2.9
878	Ockley Green	408	490	475	427	385	318	62.8	-67	-17.4
881	Portsmouth	434	489	522	466	460	429	34.9	-31	-6.7
888	Sellwood	584	602	619	593	603	564	18.8	-39	-6.5
894	Tubman	541	517	463	373	294	273	114.0	-21	-7.1
898	West Sylvan	907	915	947	897	884	878	24.9	-6	-0.7
899	Whitaker	675	482	441	357	289		N/A	N/A	N/A
Subtotal Middle Schools		10,538	10,657	10,536	9,848	9,406	8,587	818.6	-819	-8.7
906	Benson	1,475	1,479	1,501	1,498	1,501	1,452	19.5	-49	-3.3
909	Cleveland	1,322	1,366	1,381	1,388	1,332	1,449	45.6	117	8.8
911	Franklin	1,488	1,470	1,460	1,528	1,547	1,404	51.2	-143	-9.2
912	Grant	1,794	1,798	1,848	1,835	1,848	1,815	24.2	-33	-1.8

Student Enrollment



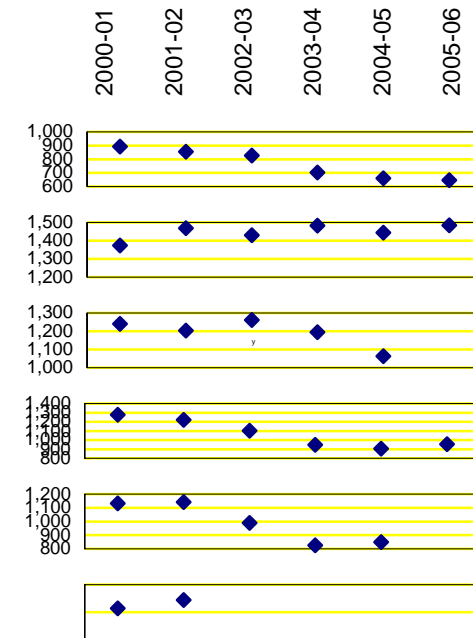
PORTLAND PUBLIC SCHOOLS

Enrollment Trends 2000-01 through 2005-06

by Program Type, School and Year (Grades PK through 12)

Program Type		Year						Enrollment Trends		
		2000-01	2001-02	2002-03	2003-04	2004-05	2005-06	St. Dev	1-Year Change	
ODE#	School							#	%	
913	Jefferson Campus	892	855	826	702	661	647	106.4	-14	-2.1
914	Lincoln	1,374	1,469	1,429	1,483	1,444	1,485	42.2	41	2.8
915	Madison	1,241	1,204	1,261	1,194	1,063	983	110.1	-80	-7.5
917	Marshall Campus	1,278	1,222	1,102	949	906	955	156.3	49	5.4
918	Roosevelt Campus	1,131	1,141	989	825	850	778	158.7	-72	-8.5
922	Wilson	1,614	1,644	1,630	1,580	1,531	1,632	42.6	101	6.6
Subtotal High Schools		13,609	13,648	13,427	12,982	12,683	12,600	465.6	-83	-0.7
Subtotal Regular Schools & Programs		48,567	48,430	47,140	44,754	43,594	42,568	2,559.9	-1,026	-2.4
IB. FOCUS / ALTERNATIVE PROGRAMS										
1363	da Vinci	316	319	320	327	350	380	25.1	30	8.6
2749	E.S.L. Assessment Center	17	32	9				N/A	N/A	N/A
1362	Environmental Middle School	190	218	225	233					
2724	Head Start Early Childhood Education	606	527	620	539	528	625	47.5	97	18.4
916	Metropolitan Learning Center	419	418	420	432	439	447	12.1	8	1.8

Student Enrollment



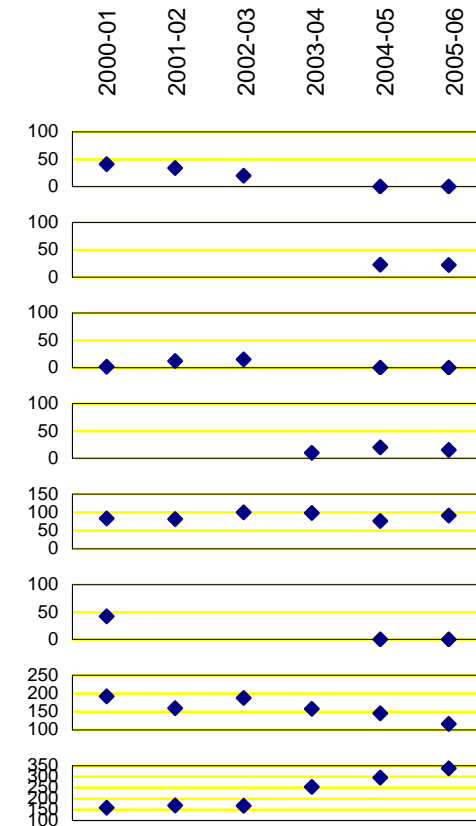
PORTLAND PUBLIC SCHOOLS

Enrollment Trends 2000-01 through 2005-06

by Program Type, School and Year (Grades PK through 12)

Program Type		Year					Enrollment Trends			
		2000-01	2001-02	2002-03	2003-04	2004-05	2005-06	St. Dev	1-Year Change #	%
ODE#	School									
910	Monroe Program	41	34	20				N/A	N/A	N/A
4227	Native Montessori Program					23	22	0.7	-1	-4.3
1817	P.I.V.O.T.	2	12	15				N/A	N/A	N/A
3167	Portland Evening H.S. at Benson				10	20	15	5.0	-5	-25.0
1818	Portland Night H.S. at Grant	83	82	100	98	76	91	9.6	15	19.7
2402	Turnaround	42						N/A	N/A	N/A
920	Meek Professional Technical H.	192	160	188	158	146	117	27.8	-29	-19.9
1364	Winterhaven (at Brooklyn)	159	169	167	254	296	339	76.9	43	14.5
Subtotal Focus / Alternative Programs		2,067	1,971	2,084	2,051	1,878	2,036	77.3	158	8.4
Subtotal Regular & Focus Programs		50,634	50,401	49,224	46,805	45,472	44,604	2,585.7	-868	-1.9
II. COMMUNITY-BASED PROGRAMS										
Subtotal Community-based Programs		1,416	1,297	1,381	1,270	1,171	1,308	86.4	137	11.7
III. SPECIAL EDUCATION PROGRAMS										
Subtotal Special Education Programs		2,311	2,330	2,170	462	562	525	962.8	-37	-6.6
IV. PUBLIC CHARTER PROGRAMS										
Subtotal Public Charter Programs		66	122	194	346	451	571	197.8	120	26.6

Student Enrollment



PORTLAND PUBLIC SCHOOLS

Enrollment Trends 2000-01 through 2005-06

by Program Type, School and Year (Grades PK through 12)

Student Enrollment

ODE# School	2000-01	2001-02	2002-03	2003-04	2004-05	2005-06	St. Dev	1-Year Change	
								#	%

PORTLAND PUBLIC SCHOOLS

Enrollment Summary by Program Type, School and Grade Level, 2005-06

Program Type		Grade Level														Total	
ODE#	School	PK	KG	01	02	03	04	05	06	07	08	09	10	11	12	UN	

PORTLAND PUBLIC SCHOOLS

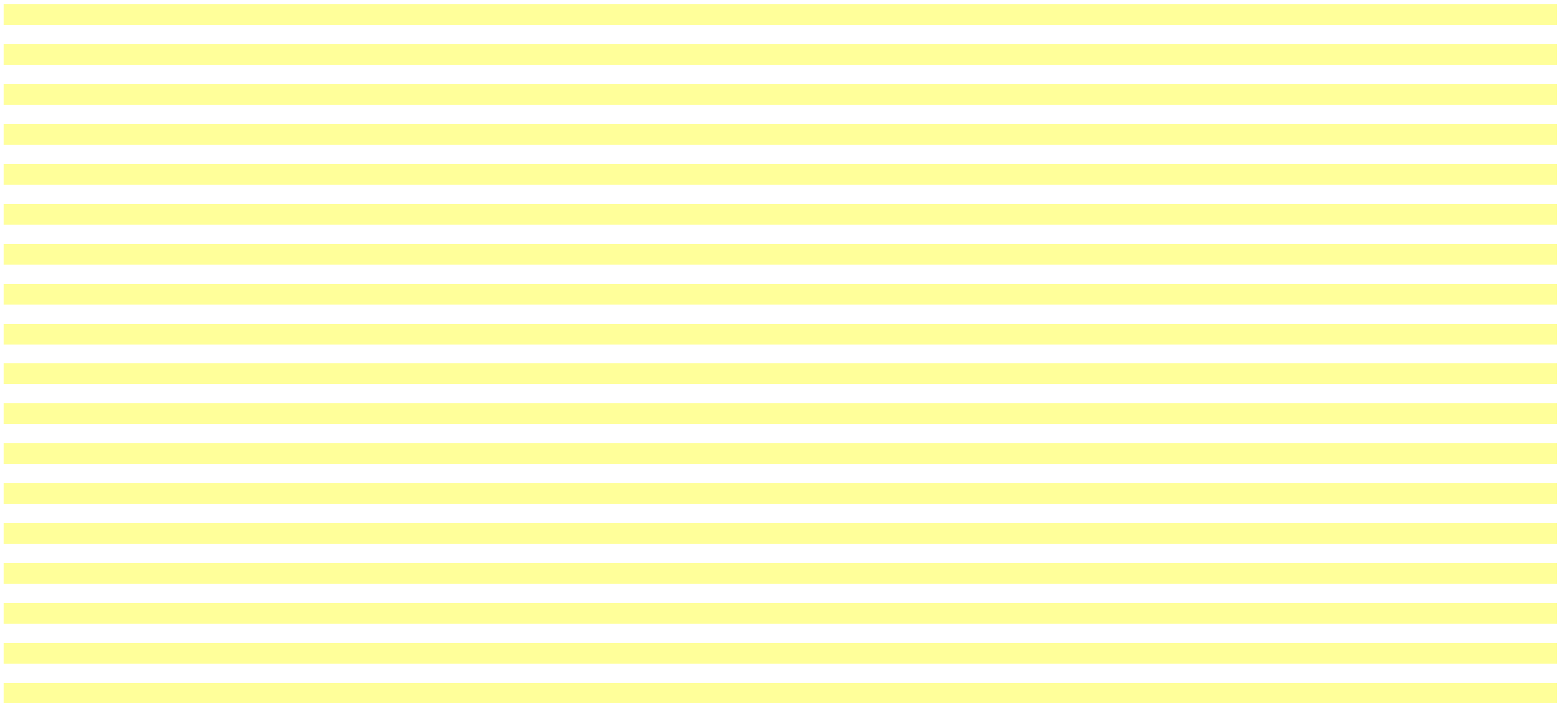
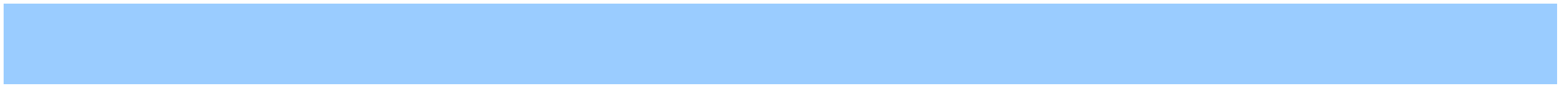
Enrollment Summary by Program Type, School and Grade Level, 2005-06

Program Type		Grade Level														Total	
ODE#	School	PK	KG	01	02	03	04	05	06	07	08	09	10	11	12	UN	

PORTLAND PUBLIC SCHOOLS

Enrollment Summary by Program Type, School and Grade Level, 2005-06

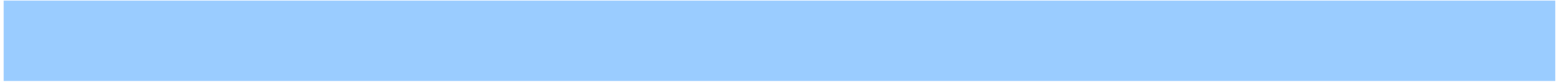
Program Type		Grade Level														Total	
ODE#	School	PK	KG	01	02	03	04	05	06	07	08	09	10	11	12	UN	
		886	3,643	3,618	3,612	3,505	3,537	3,505	3,233	3,458	3,420	3,570	3,734	3,624	3,663	0	47,008



PORTLAND PUBLIC SCHOOLS

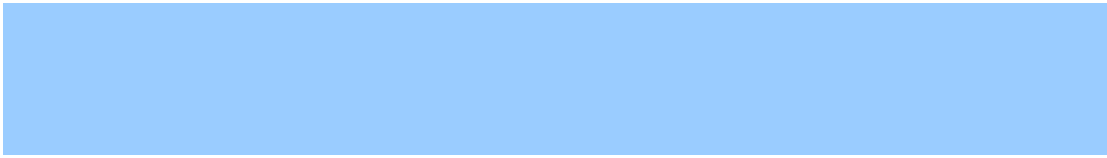
Enrollment Summary, October 2005: by Program Type, School and Ethnicity

HSAA	Type	ODE#	PPS#	School	Ethnicity												
					American Indian #	%	European American #	%	African American #	%	Asian American #	%	Hispanic American #	%	Unspecified #	%	Total #
9	1	1278	170	Markham	2	0.50	237	59.55	45	11.31	29	7.29	51	12.81	34	8.54	398
7	1	875	268	Marysville	11	3.27	161	47.92	37	11.01	81	24.11	46	13.69	0		336
8	1	879	180	Peninsula	18	7.09	59	23.23	63	24.80	27	10.63	85	33.46	2	0.79	254
2	1	883	275	Richmond	5	1.62	164	53.07	20	6.47	99	32.04	4	1.29	17	5.50	309
9	1	1299	183	Rieke	2	0.75	220	82.09	8	2.99	33	12.31	5	1.87	0		268
6	1	884	276	Rigler	8	1.81	72	16.29	93	21.04	57	12.90	209	47.29	3	0.68	442
6	1	885	278	Rose City Park	14	3.26	278	64.65	34	7.91	72	16.74	31	7.21	1	0.23	430
3	1	886	279	Sabin	4	0.95	148	35.07	190	45.02	38	9.00	39	9.24	3	0.71	422
6	1	887	282	Scott	6	1.62	146	39.46	65	17.57	51	13.78	99	26.76	3	0.81	370
8	1	889	184	Sitton	12	4.00	98	32.67	70	23.33	29	9.67	89	29.67	2	0.67	300
5	1	890	186	Skyline	3	1.49	168	83.58	1	0.50	20	9.95	9	4.48	0		201
9	1	892	190	Stephenson	3	0.92	295	90.77	3	0.92	16	4.92	6	1.85	2	0.62	325
2	1	893	191	Sunnyside Environmental	8	1.81	357	80.59	33	7.45	20	4.51	22	4.97	3	0.68	443
4	1	895	284	Vernon	6	1.56	37	9.61	231	60.00	22	5.71	87	22.60	2	0.52	385
6	1	896	286	Vestal	9	3.06	128	43.54	40	13.61	83	28.23	34	11.56	0		294
7	1	900	290	Whitman	16	3.95	173	42.72	30	7.41	68	16.79	116	28.64	2	0.49	405
4	1	902	294	Woodlawn	5	0.94	75	14.10	312	58.65	33	6.20	106	19.92	1	0.19	532
7	1	903	296	Woodmere	7	1.56	235	52.34	47	10.47	68	15.14	90	20.04	2	0.45	449
2	1	904	297	Woodstock	6	1.78	183	54.14	12	3.55	124	36.69	10	2.96	3	0.89	338
Subtotal Elementary Schools					410	1.92	11,644	54.41	3,582	16.74	2,361	11.03	3,203	14.97	199	0.93	21,399
3	2	831	235	Beaumont	6	1.12	240	44.78	218	40.67	42	7.84	30	5.60	0		536
7	2	832	236	Binnsmead	15	2.20	311	45.67	86	12.63	162	23.79	105	15.42	2	0.29	681
3	2	848	249	Fernwood	10	2.14	285	61.03	132	28.27	12	2.57	28	6.00	0		467
8	2	849	156	George	12	2.98	139	34.49	86	21.34	43	10.67	122	30.27	1	0.25	403
9	2	852	158	Gray	12	2.42	384	77.42	29	5.85	26	5.24	42	8.47	3	0.60	496
6	2	853	254	Gregory Heights	17	2.46	297	42.98	102	14.76	111	16.06	163	23.59	1	0.14	691
1	2	858	257	Hosford	6	1.34	270	60.27	32	7.14	57	12.72	81	18.08	2	0.45	448
9	2	1277	174	Jackson	10	1.44	534	76.95	45	6.48	54	7.78	49	7.06	2	0.29	694
2	2	863	261	Kellogg	20	4.13	242	50.00	49	10.12	118	24.38	55	11.36	0		484
7	2	1243	263	Lane	22	3.96	287	51.62	47	8.45	61	10.97	137	24.64	2	0.36	556
2	2	877	176	Mt. Tabor	5	0.74	503	74.41	54	7.99	77	11.39	34	5.03	3	0.44	676

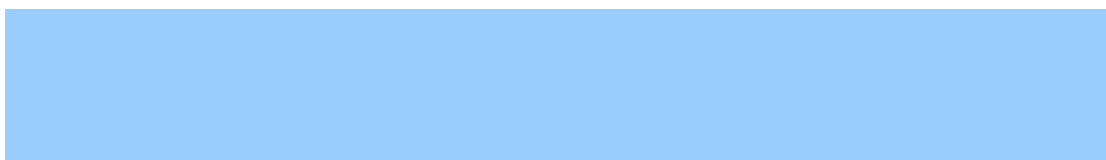


PORTLAND PUBLIC SCHOOLS

Enrollment Summary by Program Type, School and Gender, 2005-06

A series of 20 horizontal yellow bars, stacked vertically, representing data rows in a table. Each bar is of uniform height and width, spanning the same width as the blue bar above.

PORTLAND PUBLIC SCHOOLS



PORTLAND PUBLIC SCHOOLS

Enrollment Summary by Program Type, School and Gender, 2005-06

		Gender				
Program Type		Female		Male		Total
ODE#	School	#	%	#	%	
4153	BizTech High	107	36.03%	190	63.97%	297
4154	Pauling Academy of Integrated Sciences	134	47.52%	148	52.48%	282
2175	Marshall Night School	49	49.00%	51	51.00%	100
4156	Renaissance Arts Academy	151	54.71%	125	45.29%	276
918	Roosevelt Campus	400	51.41%	378	48.59%	778
4162	A.C.T. School	132	46.81%	150	53.19%	282
4165	P.O.W.E.R. School	159	55.99%	125	44.01%	284
4164	Spanish-English International	109	51.42%	103	48.58%	212
922	Wilson	764	46.81%	868	53.19%	1,632
Subtotal High Schools		6,052	48.03%	6,548	51.97%	12,600
Subtotal Regular Schools & Programs		20,922	49.15%	21,646	50.85%	42,568
IB. FOCUS / ALTERNATIVE PROGRAMS						
1363	da Vinci	269	70.79%	111	29.21%	380
2724	Head Start Early Childhood Education	333	53.28%	292	46.72%	625
916	Metropolitan Learning Center	249	55.70%	198	44.30%	447
4227	Native Montessori Program	14	63.64%	8	36.36%	22
3167	Portland Evening H.S. at Benson	4	26.67%	11	73.33%	15
1818	Portland Night H.S. at Grant	51	56.04%	40	43.96%	91
920	Meek Professional Technical H.	44	37.61%	73	62.39%	117
1364	Winterhaven	146	43.07%	193	56.93%	339
Subtotal Focus / Alternative Programs		1,110	54.52%	926	45.48%	2,036
Subtotal Regular & Focus Programs		22,032	49.39%	22,572	50.61%	44,604
II. COMMUNITY-BASED PROGRAMS						
1811	Albina Youth Opportunity School	22	43.14%	29	56.86%	51
1628	DePaul Center	7	33.33%	14	66.67%	21
2409	LISTOS	39	42.86%	52	57.14%	91
1803	Mt. Scott Park Center for Learning	43	44.79%	53	55.21%	96
3012	New Avenues for Youth	12	60.00%	8	40.00%	20
3151	Open Meadow / CRUE	14	30.43%	32	69.57%	46
1821	Open Meadow H.S.	32	45.07%	39	54.93%	71
3021	Open Meadow M.S.	21	46.67%	24	53.33%	45
2761	P.C.C. Bilingual	77	32.77%	158	67.23%	235
2762	P.C.C. G.E.D.	61	53.51%	53	46.49%	114
2763	P.C.C. H.S. Completion	88	51.46%	83	48.54%	171
2752	P.I.C. Night School	2	15.38%	11	84.62%	13
1816	P.O.I.C.	45	42.45%	61	57.55%	106
1658	Pacific Crest Community School	6	60.00%	4	40.00%	10
3496	Pathfinders Academy	9	100.00%		0.00%	9
1815	Portland International Community	11	36.67%	19	63.33%	30
1820	Quest Schools	23	35.38%	42	64.62%	65

PORTLAND PUBLIC SCHOOLS

Enrollment Summary by Program Type, School and Gender, 2005-06

	Gender				
Program Type	Female		Male		Total
ODE# School	#	%	#	%	

[Redacted]

[Redacted]

[Redacted]

[Redacted]

[Redacted]

PORTLAND PUBLIC SCHOOLS

Enrollment Summary by Program Type, School and Gender, 2005-06

Program Type		Gender				Total
		Female		Male		
ODE#	School	#	%	#	%	

Applegate, Edwards, Kenton, Richmond and Smith Elementary Schools were closed at the end of the 2004-05 school year. Whitaker Middle school was closed as well. Most elementary school-aged students residing in the Applegate neighborhood area went on to attend Woodlawn. Similarly, students residing in the Edwards neighborhood area went on to attend Abernethy, those at Kenton to Chief Joseph; those at Richmond to Abernethy, Creston or Glencoe; and those at Smith went on to Capitol Hill, Maplewood or Markham. Most middle school students residing in the Whitaker neighborhood area went on to attend Tubman.

Enrollment counts for the 2005-06 were derived from the eSIS Report 28-State Reporting (OR), Fall Membership.

Pioneer Schools consist of elementary, middle and high school programs. It was formerly known as ES B Program at Youngson, MS B Program at Foster and HS B Program at Columbia.

